

1550nm SLED Broadband Light Source



Application:

Optical fiber sensing
 Optical fiber passive component spectrum testing
 Optical fiber grating, DWDM, filter testing
 Optical fiber measurement equipments

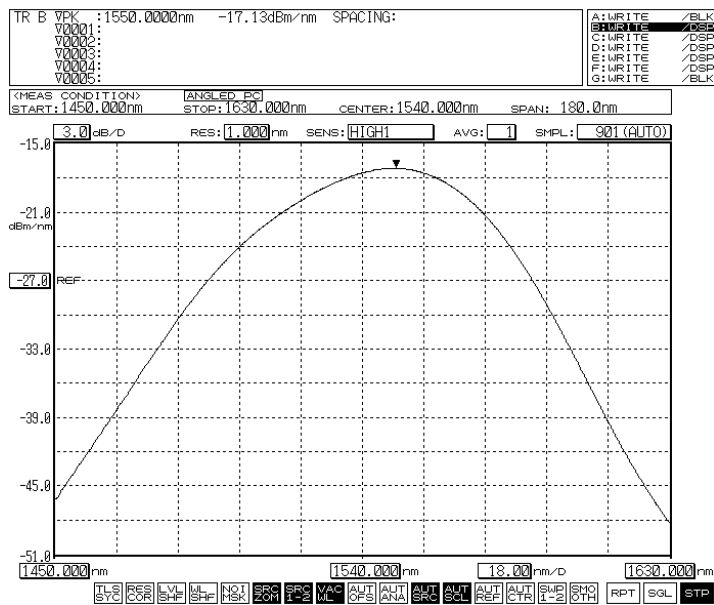
Features:

High output power
 High stability
 Broadband spectrum output

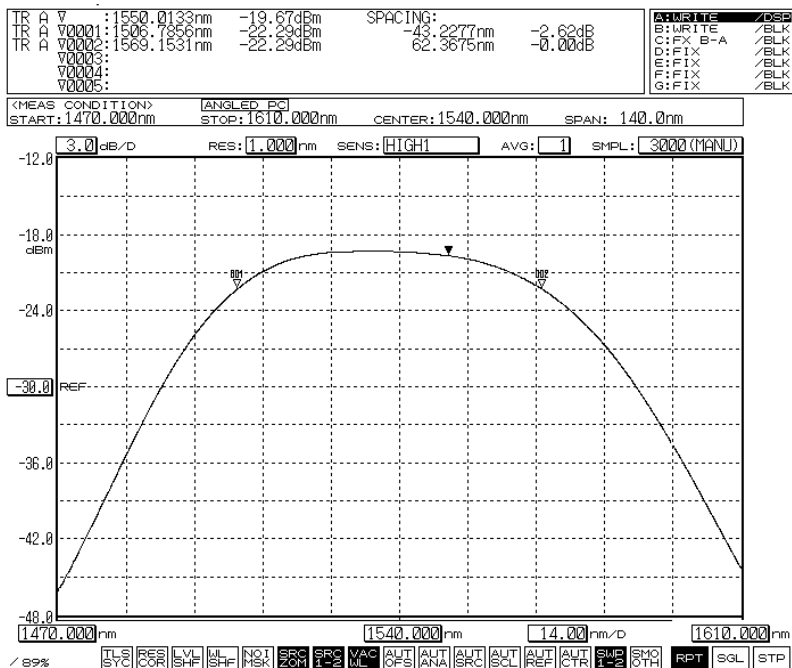
Specifications:

Parameter	SLED
Central wavelength (nm) 中心波长	1550 ± 20
Spectrum width (nm)(3dB) 3dB带宽	≥38
Output power (mw) 输出功率	1、5、10、20
Output power short term stability 输出功率短时间稳定性	≤±0.005dB/15 min
Output power long term stability 输出功率长时间稳定性	≤±0.02dB/8 hour
Operating mode 工作模式	CW
Fiber pigtail 尾纤类型	Single mode SMF-28
Output connector 输出连接头	FC/PC, FC/UPC or FC/APC
Operating temperature 工作温度	0°C ~ 40°C
Storage temperature 存储温度	-20°C ~ 70°C
Power supply 电源	110/220V AC ± 10%, 50Hz, 20W
Dimensions (L×W×H) 尺寸	315×215×88

Typical Spectrum:



2mw SLED



10mw SLED

Order Information:

OS-S	Type	Display	Power Adjustable	Operating Wavelength	Fiber Type	Power	Connector
	M=Module D=Desk-top	0=Without 1=With	0=Without 1=With	1310=1310nm 1480=1480nm 1550=1550nm etc	S=SM Fiber P=PM Fiber M=MM Fiber	1=1mw 10=10mw 20=20mw etc	FC/UPC FC/APC etc