

1600nm ASE Broadband Light Source

1600nm低偏宽带光源



Application: (应用)

FBG Optical Sensor System (FBG 光纤传感系统)
 Optical Communication (光纤通信)
 Optical Passive device testing (光无源器件测试)
 Spectrum analyses (光谱分析)

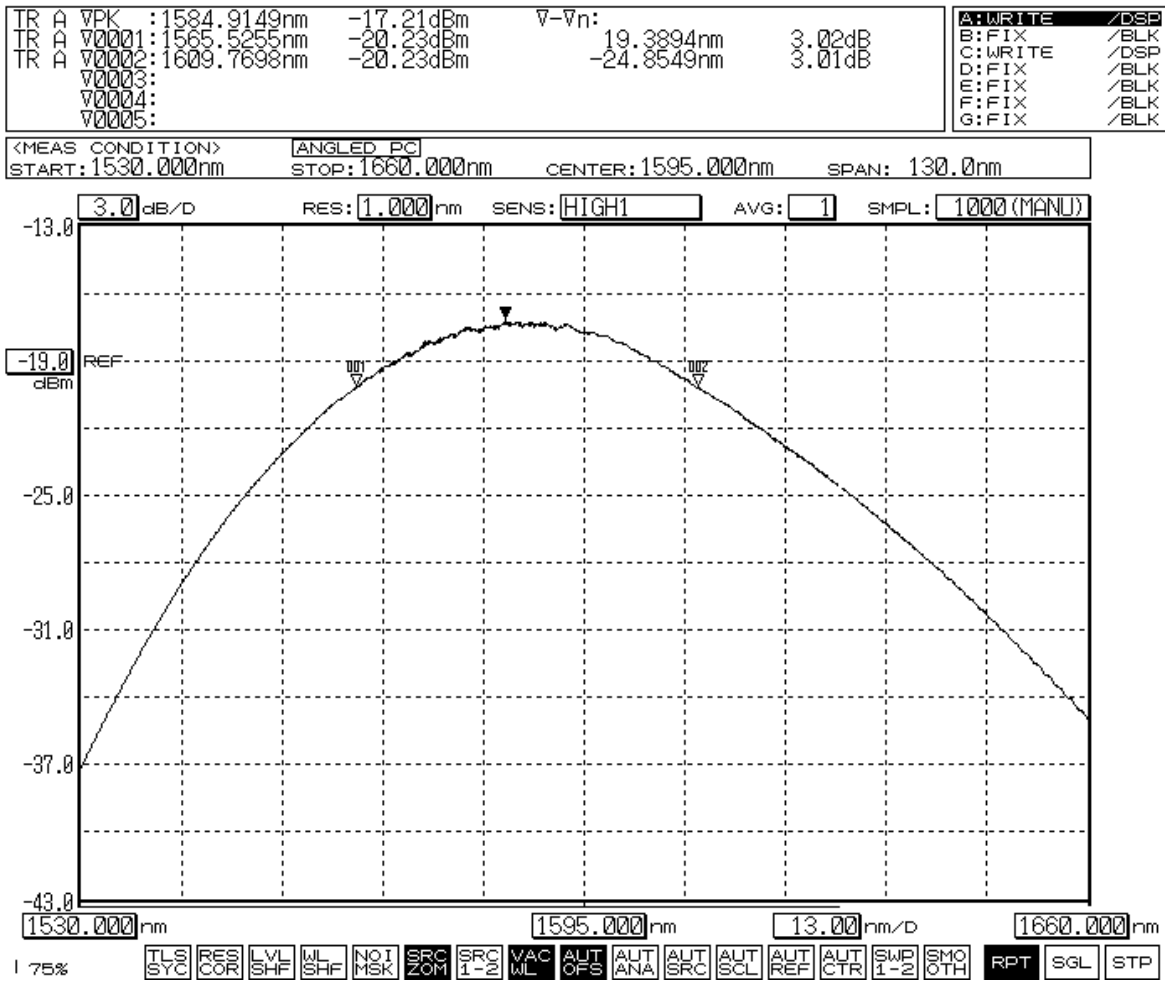
Features: (特点)

High Precision ATC and APC Control Circuit (具有高精度的ATC和APC控制电路)
 High stability and reliability (高的稳定性和可靠性)
 Broadband spectrum (很宽的光谱)

Specifications:

Parameter	ASE
Central wavelength (nm) 中心波长 (nm)	1540~1640
Output power (mW) 输出功率 (mW)	5 - 10
Spectrum density (dB/nm) 光谱密度 (dBm/nm)	Min: -30dBm/nm
Output power short term stability (dB) 输出功率15分钟稳定性 (dB)	$\leq \pm 0.005/15 \text{ min}$
Output power long term stability (dB) 输出功率8小时稳定性 (dB)	$\leq \pm 0.02/8 \text{ hour}$
Spectral stability (dB) 光谱稳定性 (dB)	$\leq \pm 0.05 (5 \text{ min})$
Operating mode (工作模式)	CW
Fiber pigtail (尾纤类型)	Single mode SMF-28
Output connector (输出连接头)	FC/APC
Operating temperature (工作温度)	0 ~ +65 (-20 ~ +65 available)
Storage temperature (存储温度)	-20°C ~ 70°C
Power supply (电源)	110/220V AC, +5V or +3.3V DC; >500mA; $\Delta V < 1\%$
Dimensions (L×W×H) (机箱尺寸)	90X70X20; 322×220×88

Typical Spectrum:



Order Information:

FL-ASE-1600	Type	Standard	Output Power	Spectrum Density	Connector
	M=Module D=Desk-top	Without Display Power: Without Adjust	1=5mW 2=10mW etc	1=-30dBm/nm 2=-25dBm/nm etc	FC/UPC FC/APC